

Instructions / Installation instructions S-Trap

S-TRAP

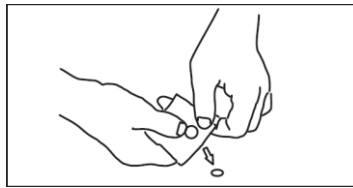
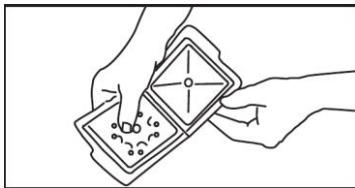
Specialized monitoring trap for catching insects, which damage library and museum collections.
To be used also in private apartments.

Effective against:

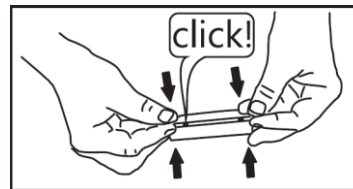
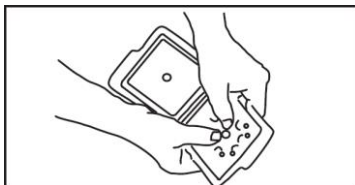
- Long-Tailed Silverfish (*Ctenolepisma longicaudata*)
- Silverfish (*Lepisma saccharina*)
- Firebrats (*Thermobia domestica*)
- Museum beetles -larvae (*Anthrenus museorum*)
- Brown carpet beetles -larvae (*Attagenus smirnovi*)
- Booklice (Psocoptera)
- Drugstore beetles (*Stegobium paniceum*)

Verwendung:

- a. Open the trap and remove the attractant tablet from the bag.



- b. Place the tablet in the container at the bottom of the trap (the part with arced channels) and close the trap.



- c. Set the trap on an even surface.



Caution! Read necessarily!

Dear Customer, for the correct functioning of the trap it is necessary to comply with the following instructions:

1. The trap should be placed on the floor only (do not place the trap on shelves, tops or cabinets).
2. The trap should be placed on smooth surfaces only.
3. The trap should be placed in one place for min. 1 month (slight relocations are permitted).

* Possible observed cases of avoiding the traps by silverfish are normal. Silverfish are extraordinarily careful insects and only after recognizing the trap as a safe place they return to it and can be caught.

The effectiveness of the trap increases rapidly along with its implementation time.

The S-Trap is an insect trap used to monitor the appearance of Long-Tailed Silverfish (*Ctenolepisma longicaudata*) and silverfish (*Lepisma saccharina*) and other walking insects in museums. Since the trap does not contain any dangerous chemical substances, it can be used safely to protect all museum materials and used in close proximity to these objects. The traps monitor the incidence of insects by trapping them, capturing both larvae and adult insects.

I – General Information about the S-Trap

1.) Placement of Traps:

- **Directions for basic trap placement:** Place them in locations where you have observed insects or traces of insect presence.

Flat surfaces: Place the traps on flat surfaces only.

IMPORTANT NOTE!

A trap placed on a non-flat surface may not work effectively. Floor unevenness can lift the traps so that entrance channels are no longer easily accessible for insects.

- **Locations with dust buildup:** The traps work effectively even in dusty areas.
- **Humidity levels:** The traps can be placed in the entire areas where museum objects are located, in storage rooms, restoration rooms, exhibition rooms or employee lunch rooms.

During trap placement in these areas the relative humidity level of rooms should be observed.

- **Number of traps used:** This is determined by the relative humidity:
under 40 %: One trap per room regardless of room size,
over 40 %: One trap per 100 m² of room surface

2.) Trap location in libraries and museums:

- **Furniture:** The traps may be placed on the floor, on or under shelves, also on the bottom shelves. In the case of cabinets, cupboards or other furniture, for example in restoration rooms, the traps should be placed on the floor or on / under furniture only.
- **Room floors:** Traps may be placed on smooth floors, and also on low pile and high pile carpets.
- **Room walls:** Traps may be placed on the floor next to the walls and also in room corners.
- Please note! We highly recommend placing the traps on the floor near ventilation openings. Traps should not be mounted on the walls.
- **Placement density:** Traps should be placed 10 metres apart. In large storage rooms and warehouses there should be 20 metre placement between traps. (*Exception: Additional traps that are temporarily placed in the room).

- 3.) Number of insects captured:
 - If a trap captures less than five insects, continue monitoring the room by exactly recording the date, number and type of insects noted. If you have difficulty identifying the type of insect, please send us the photos to insects.recognition@panko.pl.
 - If a trap captures more than five insects (all types included), we recommend increasing the number of traps in the room temporarily by one additional trap for each current trap in the room. The additional trap should be placed around 2 metres from the original trap. As soon as the total number of insects for both traps is less than five, the additional trap is not needed.
- 4.) Frequency of trap replacement
 - Traps should be replaced every 4 to 8 weeks depending on the level of safety required. Replacement every 6 weeks is recommended. When considering the replacement frequency, consider the influence of external factors on the object in question (public library, frequency of deliveries, location of delivery arrival, frequency of exchanging works with other institutions, humidity level surrounding the object).
- 5.) Marking the trap locations: To make it easier to find the traps, use a sticky note to mark the locations (on the wall, on furniture).
- 6.) Safety of inventories: The traps do not contain any substances that could create a potentially dangerous effect. Insects are lured using a safe food attractant which does not release any compounds that could endanger inventories.

II – Recommendations for Setup of S-Traps – SUMMARY

- 1.) Check the air humidity level: This will provide you a benchmark on how many traps you should set up in the room.
- 2.) Assess the type of flooring: If the entire floor is carpeted, place the trap on a small protective mat.
- 3.) Determine where to place the traps. Check to see which route the insects are using. Ensure that the traps are placed on the floor: best in a corner or a narrow section of the room. Also best are locations close to ventilation openings.
- 4.) Replace the traps every 6-8 weeks. Check the traps to count the number of insects. If there are more than five insects, we recommend adding a second trap near each original trap location during the next service period (6-8 weeks).

Grafschaft, April 2016